

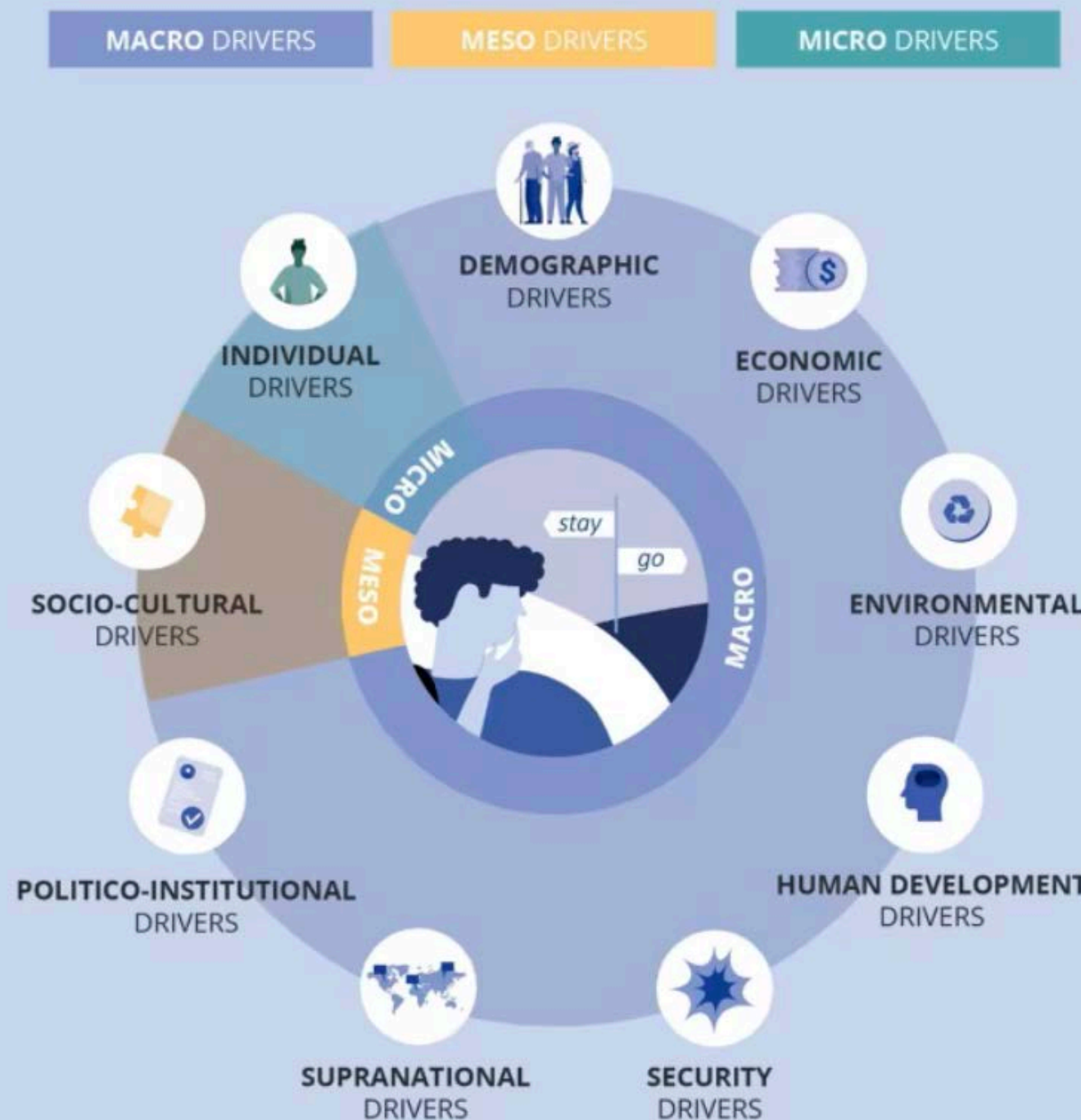


Migration, Labour and the Health of a Changing Planet

Dr Poonam Dhavan
Director, Migration Health Division
PMAC 2026 - 30 January 2026



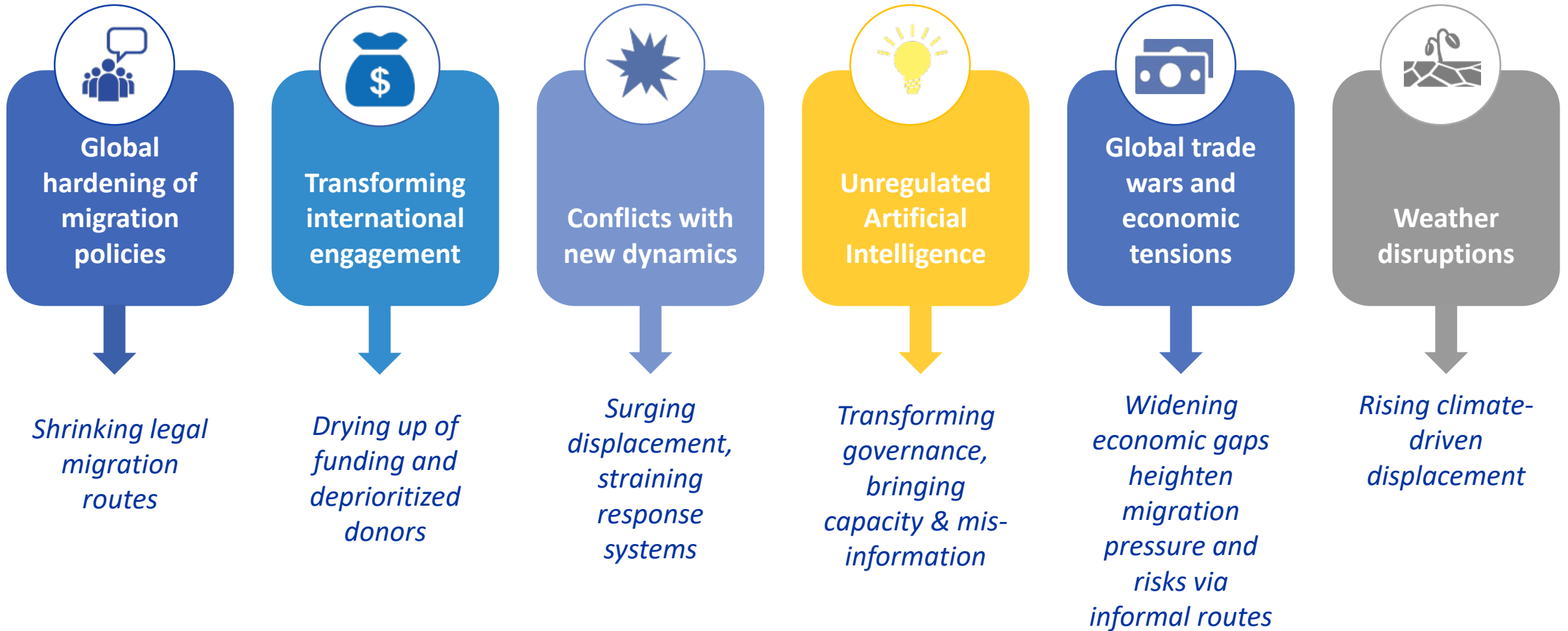
Drivers of Migration



Dynamic concept

Complex set of Interlinking factors that influence the decisions relating to migration

Changing Context

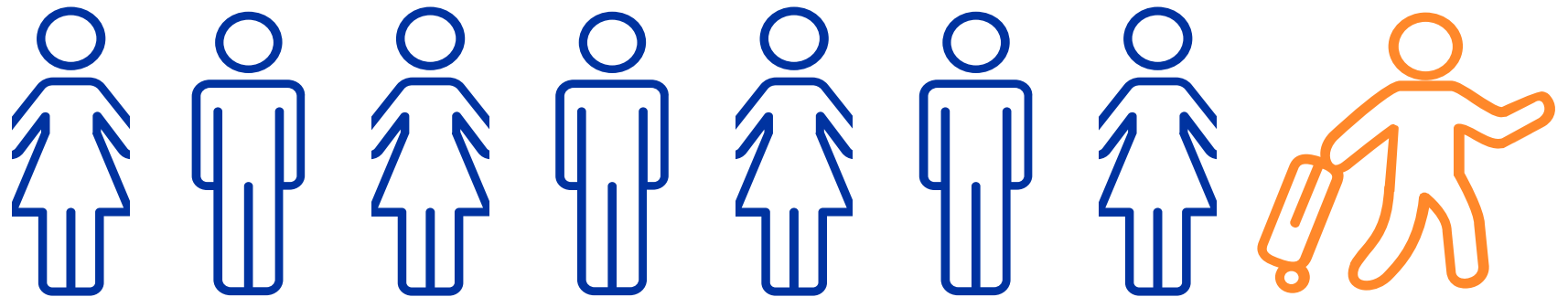


➔ Changing patterns of migration and rising risks

Source: IOM 2025

Global Migration

1 in 8 people worldwide is **on the move**



304 million international migrants, 3.7% of the world's population face health challenges, including maternal mortality risks due to displacement, language barriers, and limited care access.

Global Estimates in the Labour Force



68%

of migrants in the service sector, including care and domestic work



25%

pay gap between migrant workers and nationals

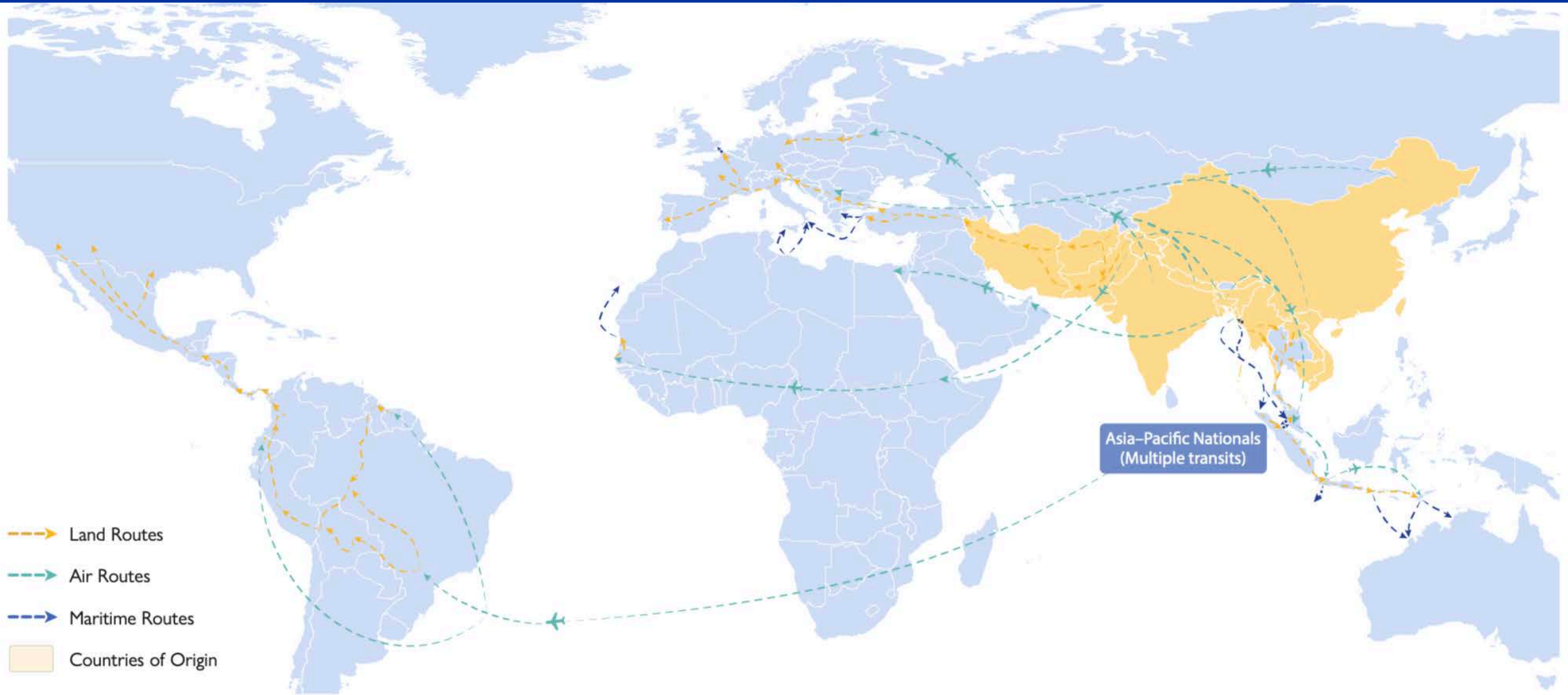


3x

more risk of forced labour for migrants

Source: ILO estimates (2024) based on 2022 figures

Mixed Migration Flow: Asia-Pacific



This map is for illustration purposes only. Names and boundaries on this map do not imply official endorsement or acceptance by IOM.

Source: Retrieved from IOM, 2025

Intersecting Agendas



Global Migration Agenda

Development Agenda

Global Health Agenda



**United Nations
Network on Migration**

Working Better Together



**Global Compact
FOR Migration**



**GLOBAL
COMPACT ON
REFUGEES**



**INTERNATIONAL
MIGRATION
REVIEW FORUM '26**



**SECOND Asia-Pacific Regional Review of
Implementation of the Global Compact
FOR Safe, Orderly AND Regular Migration**

4-6 FEBRUARY 2025 BANGKOK, THAILAND



WHO Member States conclude negotiations and make significant progress on draft pandemic agreement

16 April 2025



The 2026 High-level Meeting on Pandemic Prevention, Preparedness, and Response



**ASSOCIATION
OF SOUTHEAST
ASIAN NATIONS**

**A COMMUNITY OF
OPPORTUNITIES FOR ALL**



PMAC | PRINCE MAHIDOL AWARD CONFERENCE **2026**

IOM's Strategic Health Focus

01

Saving and protecting people on the move



Save lives and protect people on the move by improving access to quality health care and provision of health and psychosocial support services

02

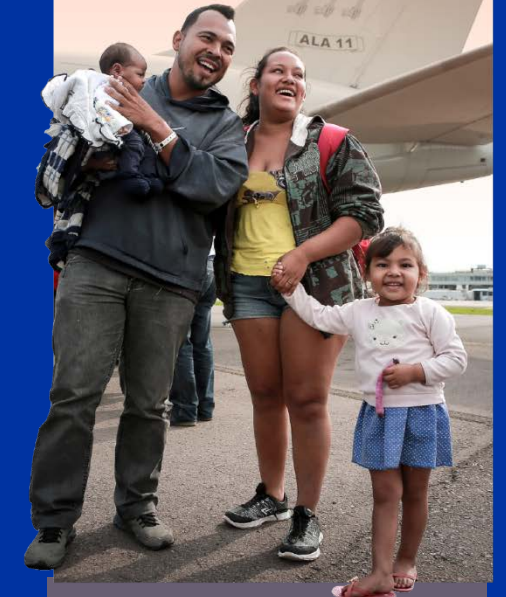
Delivering solutions to displacement



Strengthen health systems, anticipate and mitigate health-related risks related to displacement to support durable solutions, and integrate psychosocial support services in peace and recovery programmes

03

Facilitating pathways for regular migration



Promote the health and psychosocial wellbeing of migrants and people on the move including provision of direct services, and strengthen health governance for regular migration pathways

Strategy Meets Reality: Health as Connector



The Migration Health Assessment Centre (MHAC) in Amman (Jordan) provides pre-migration health activities (PMHAs) to help migrants seeking to relocate abroad with their Visa requirements © IOM/Raber AZIZ 2022

- **Connecting people on the move** to systems under strain
- **Identifying vulnerability** early before crises escalate
- **Integrating health** measures into humanitarian response and recovery
- **Ensuring continuity of care** across borders and along pathways
- **Strengthening preparedness**, prevention, disease surveillance and outbreak response
- **Linking physical health** with mental health and psychosocial needs

Continuity of Care Across Borders



Migrant workers in Southern Africa. Photo: IOM

CONNECTING ACROSS BORDERS & SECTORS: *Mozambique*

- **Working with Ministries of Health**
Established a sustainable model for occupational health screening
 - 3 occupational health centres
 - 7'426 individuals screened
 - 2'500 workers identified with hearing loss
 - 6'464 chest X rays reviewed
- **Within health and beyond**
Facilitated access to compensation for ex-miners with work-related illness
 - 120 persons eligible for compensation

Strategy Meets Reality: Health as Foundation for Labour Markets



Migration Health Assessment: Migration health services at the Migration Health Assessment Centres (MHAC) in Abuja

- **Future of work:** human mobility essential in care, services, agriculture, construction and beyond
- **Health care shapes** whether can participate in labour markets, work safely and productively
- **Lack of access to health and care** => labour shortages, turnover, risks of exploitation with consequences for workers, employers, and systems

Without health, labour mobility does not deliver economic benefits but transfers risk.

Diaspora communities link skills & labour markets across borders.

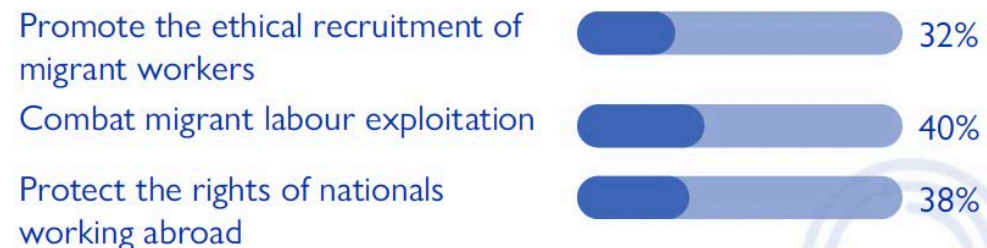
Workforce Mobility & Health Systems



Photo: WHO / MOH Malta

ADDRESSING THE GLOBAL SHORTAGE OF NURSES AND CARE WORKERS

Share of MGI-Assessed Countries with dedicated measures to:



Share of MGI-assessed countries taking part in a regional agreement promoting labour mobility:



Source: 2025 MGI database.

Strategy Meets Reality: Health as Climate Adaptation and Resilience

Climate change reshapes human mobility, health, livelihoods and labour markets simultaneously

Health systems as indicators of climate stress

Strengthen climate resilience through migrant-inclusive health approaches

- Reduce climate-related health risks for migrant workers
- Strengthen early detection and response to climate-related health threats
- Adapt health service delivery and infrastructure operations to frequent climate-related shocks, especially in fragile and mobility contexts



The communities who live in the tropical atolls are among the most economically, socially and physically disadvantaged populations in the Autonomous Region of Bougainville, which faces coastal erosion due to the combined impacts of sea level rise and environmental degradation. © IOM 2016/Muse Mohammed

Harnessing Synergies on Climate Action

FOSTERING MIGRANTS-INCLUSIVE HEALTH SYSTEMS: MENA - *Iraq, Jordan, and Lebanon*



- **Partnering for health & climate change:**
Migration Multi Partner Trust Fund (M-MPTF) as pooled funding mechanism (IOM, WHO, UNDRR)
- **Embedding mobility into climate and health systems:**
Mainstreaming human mobility lens into national public health adaptation and Disaster Risk Reduction Strategies
- **Implementing climate-informed health action:**
 - Conducting vulnerability scoring and data-driven risk assessments
 - Developing gender-sensitive research tools
 - Building multi-agency collaboration

Looking Ahead: Building Resilient Futures



Nutrition Support: Child's nutritional status check at an IDP settlement in Sudan's Darfur region. Photo: IOM

Are health systems ready for human mobility?

- **Migrant-inclusive health systems** strengthen preparedness and adaptability
- **Health workforce mobility** as an opportunity to advance health equity & resilient labour markets
- **Safe, fair, ethical and predictable mobility pathways with public health measures** support stability and economic growth
- **Coordinated governance and cross-border cooperation** across sectors is essential to achieve global health goals
- **Harnessing diaspora skills**, investments and professional networks will be increasingly important for resilient health systems and labour markets

IOM in a Changing Planet

01

MIGRATION GOVERNANCE

Governance Matters
when implemented



**TRUSTED ENTRY POINT
FOR DIALOGUE
TRANSLATING NORMS
INTO OPERATIONAL
COOPERATION**

02

LABOUR MOBILITY

Mobility Works for
people & economies

Responding to labour
shortages while
upholding dignity and
opportunities

**SAFE, FAIR, AND
PREDICTABLE LABOUR
MOBILITY PATHWAYS
THAT PROTECT HEALTH
AND WELLBEING**

03

HEALTH SYSTEMS

Resilience starts with
inclusive health systems

Strengthening
preparedness with
climate change in mind

**ADAPTIVE, MIGRANT-
INCLUSIVE AND CROSS-
SECTORAL HEALTH
SERVICE DELIVERY**

Thank You

Contact:
Dr. Poonam Dhavan, pdhavan@iom.int



IOM staff conduct an outreach session at the Wattana Learning Center in Ranang, Thailand. Photo: IOM.